

IRELAND

CASTLES IN COMMUNITIES SUMMER ARCHAEOLOGY FIELD PROGRAM

JUNE 22nd ~
AUGUST 1st

2024

- *Community Orientated*
- *Immersive, Hands-On, Teamwork*
- *Tech Focus, Ground Penetrating Radar, Magnetometry*
- *Drones, GIS, Lab Methods, Faunal Analysis, Flotation*

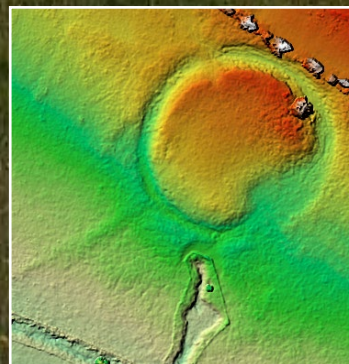
Excavation



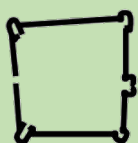
Geophysics



Survey



Lab



Castles In
Communities



[APPLY ONLINE](#)

CONTACT US

cicassresearch@gmail.com

